

ACCU SLIDE™

EXPANDABLE ROOM SYSTEM



DESIGNER'S GUIDE

EVERYTHING

YOU NEED TO KNOW

TO GET STARTED...

DESIGN YOUR ACCU-SLIDE SYSTEM IN JUST **TEN** EASY STEPS:

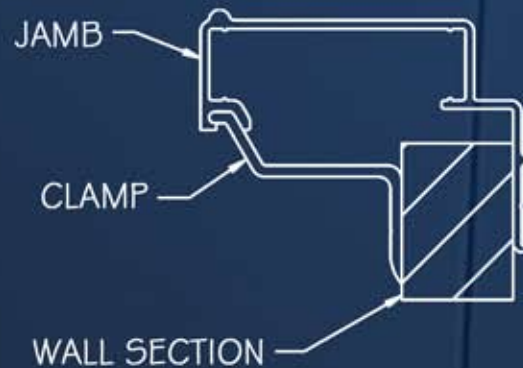
1. CALCULATE ROUGH OPENING SIZE	4
2. CALCULATE ROOM SIZE FROM DRAWING & CHOOSE OPTIONS	5
3. PREPARE ROUGH OPENING	14
4. PREPARE ROOM	16
5. MOUNT PULLEYS	18
6. MOUNT MOTOR	19
7. PLACE ROOM & MOUNT STANDOFFS	20
8. MAKE CHAIN & CABLE CONNECTIONS	21
9. ADJUST	22
10. FINISH	23

GET STARTED →

WHY USE NORCO'S ACCU↔SLIDE™ ?

- *Light weight aluminum construction.*
- *Easy to assemble picture frame design.*
- *Room is cable driven from (4) corners inside, (4) corners outside, this allows the room to track straight and seal tightly all around.*
- *Allows for fine tune adjustment of each corner.*
- *Cables provide simple mechanics inside of coach, eliminating the need for racks, pinions, shafts, hydraulic tanks and fluid.*
- *Accu-Slide can be placed in side-wall, end-wall, above wheel well and on top of floor. (See Step 2 for options)*
- *Slide mechanics can be mounted above or below rough opening.*

The first design uses (2) Jambs, Header and Sill made of the same extrusion as pictured below. This design allows the unit to be shipped as an assembled "picture frame" if within the shipping size and locality.



The second design uses (2) Jambs and Header, made of same extrusion as above, a flat sill as pictured below:



This design will be shipped with "picture frame" to be assembled by customer, it also allows for $\frac{3}{4}$ " more room height than design 1. See the following page for shipping and packaging descriptions.

RECEIVING YOUR ACCU-SLIDE SYSTEM

YOUR ORDER WILL BE SHIPPED IN ONE OF THE FOLLOWING CONFIGURATIONS, DEPENDING ON SIZE, STYLE AND LOCALITY...



If your slide-out is within shipping limits, the product will come assembled & stacked.

**Based on the style of the sill.*



If your slide-out exceeds shipping limits, the product will come partially assembled.

STEP 1: CALCULATE ROUGH OPENING SIZE



EXAMPLE

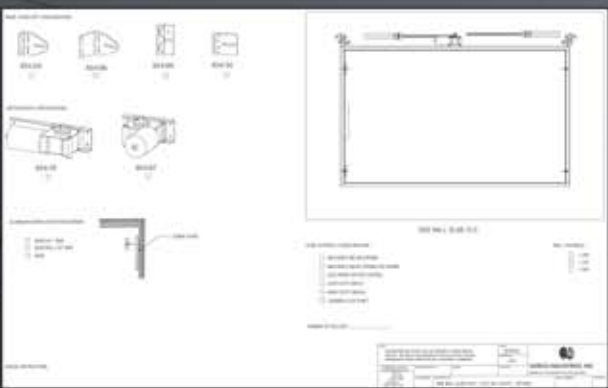
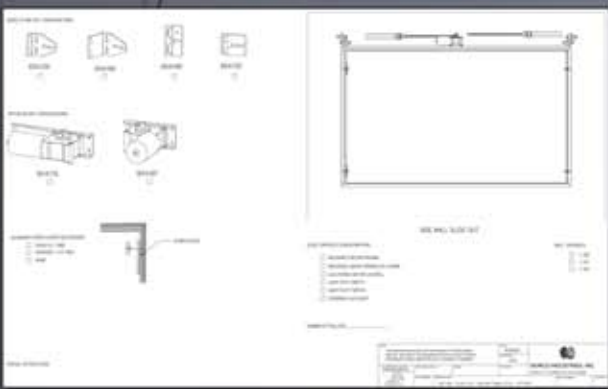
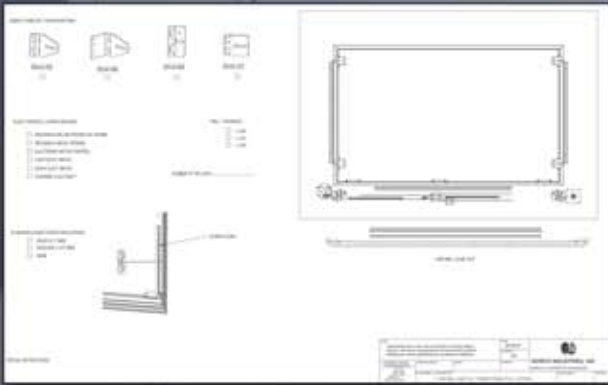


HEIGHT 71 1/2" LENGTH 106 1/2" DEPTH 23"

HEIGHT _____ LENGTH _____ DEPTH _____

DEPTH= OUTSIDE TO OUTSIDE ROOM DEPTH

STEP 2: CALCULATE ROOM SIZE FROM DRAWING & CHOOSE OPTIONS



OUTSIDE

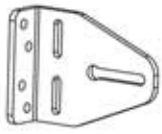
INSIDE

OUTSIDE
STANDOFF

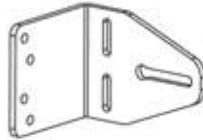
INSIDE
STANDOFF

REFER TO THE DRAWINGS ON THE FOLLOWING PAGES →

INSIDE STAND-OFF CONFIGURATIONS:



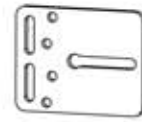
854129



854198



854196



854130



SLIDE CONTROLS CONFIGURATIONS:

- MECHANICS BELOW OPENING (AS SHOWN)
- MECHANICS ABOVE OPENING
- ELECTRONIC MOTOR CONTROL
- LIGHT DUTY SWITCH
- HEAVY DUTY SWITCH
- OVERRIDE FLEX SHAFT

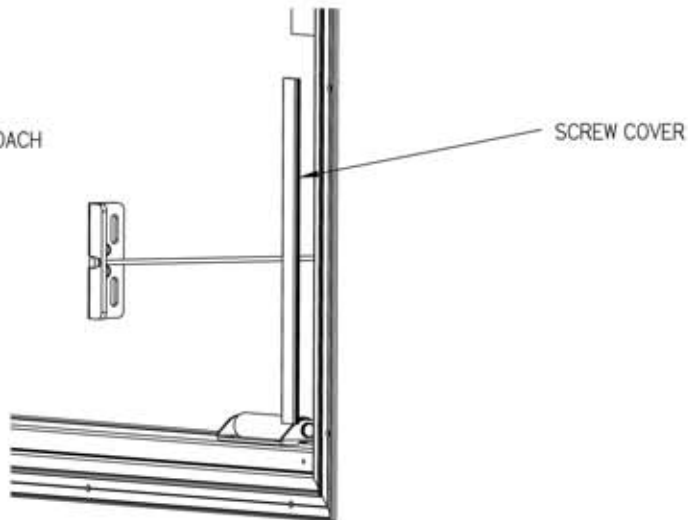
WALL THICKNESS:

- 1-3/8"
- 1-1/2"
- 1-7/8"
- 2-1/4"

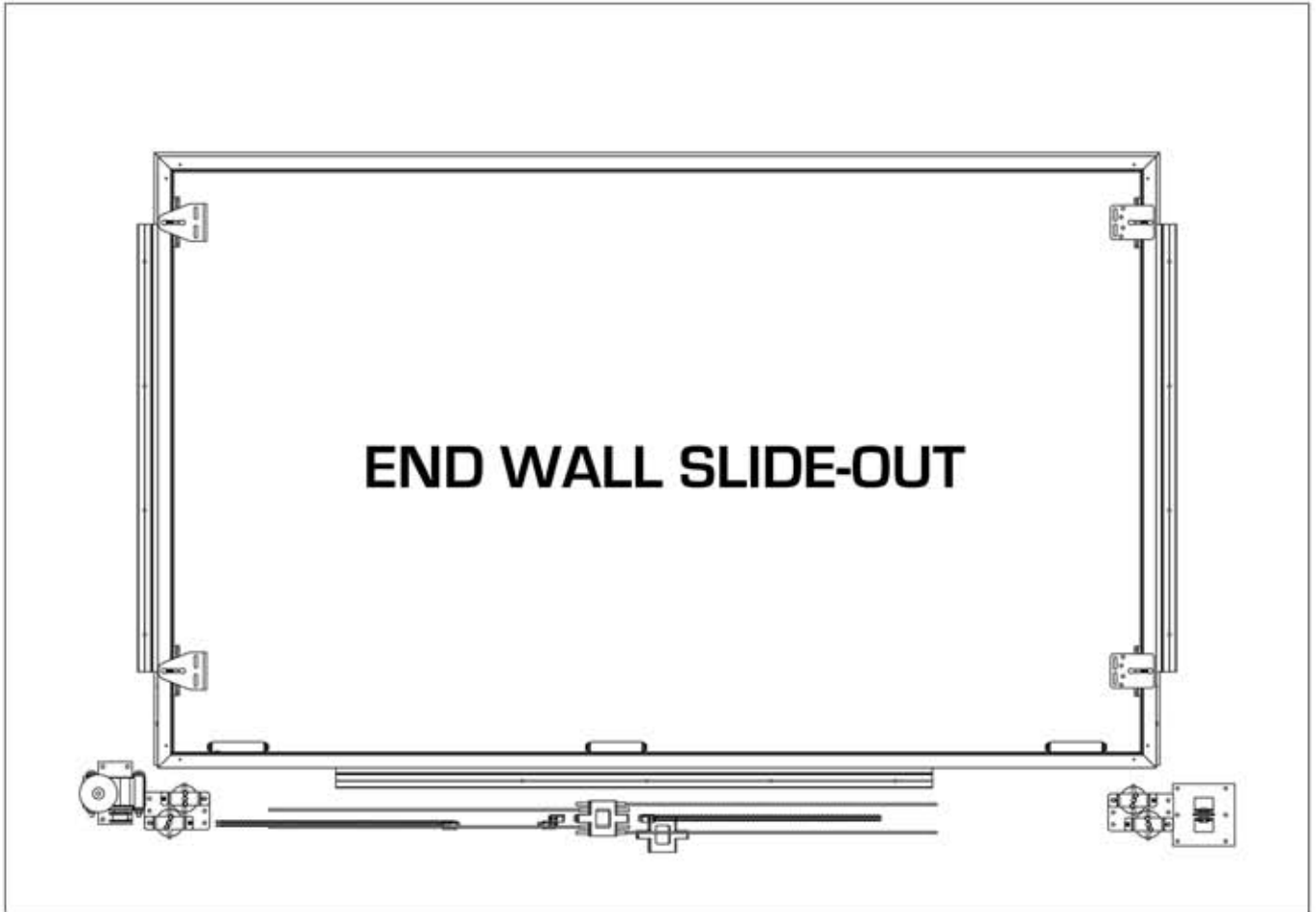
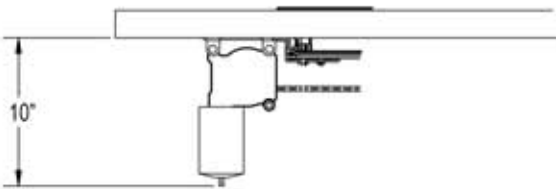
NUMBER OF ROLLERS: _____

ALUMINUM SCREW COVER FOR EXTERIOR:
SCREW COVER SNAPS INTO FRAME OUTSIDE OF COACH

- 1" WIDE
- 1-1/2" WIDE
- NONE



SPECIAL INSTRUCTIONS:




THIS PART IS MOUNTED ON EACH SIDE WALL, AS A TRACK FOR ASSEMBLY BELOW

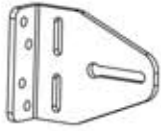


THIS ASSEMBLY IS MOUNTED ON FLOOR OF SLIDE ROOM
AND EACH ROLLER TRAVELS IN TRACK SHOWN ABOVE

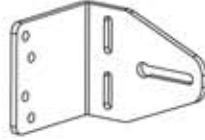
THIS DESIGN USES THE SAME EXTRUSION FOR JAMBS, HEADER, SILL
AND IS RECOMMEND FOR END WALL APPLICATIONS

NOTE: THIS DRAWING AND ITS DATA ARE THE PROPERTY OF NORCO INDUSTRIES, INC. ANY USE OF THIS DRAWING OR ITS DATA WITHOUT WRITTEN PERMISSION OF NORCO INDUSTRIES, INC. IS EXPRESSLY FORBIDDEN.		DATE: 8/26/03	 NORCO INDUSTRIES, INC. 53236 C.R. 13 ELKHART IN. (574) 262-3400
TOLERANCES UNLESS OTHERWISE SPECIFIED: XX ±.03 XXX ±.005 XXXX ±.0005 ANGLES ±1° FRACTIONS ±1/32		DRAWN BY: JDS	
MATERIAL SPEC #:	FINISH:	APVD BY:	
E.D. NUMBER:	DESCRIPTION: END WALL SLIDE OUT - OPTIONS	PART NUMBER:	REVISION:

INSIDE STAND-OFF CONFIGURATIONS:



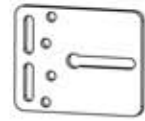
854129



854198



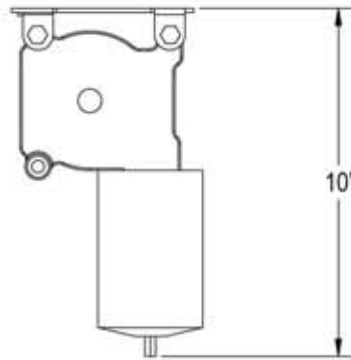
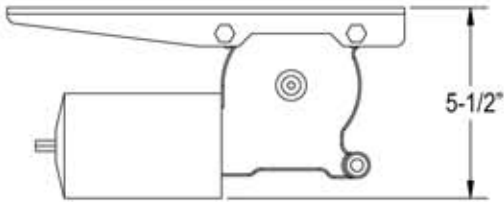
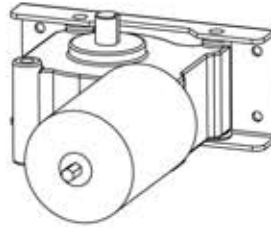
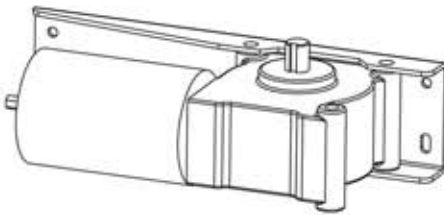
854196



854130

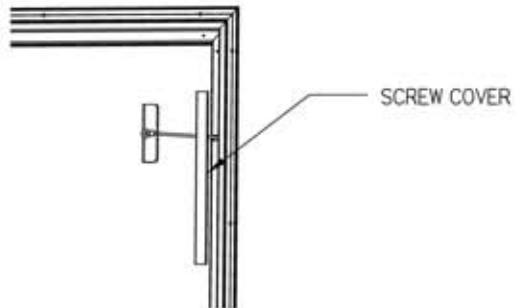


MOTOR MOUNT CONFIGURATIONS



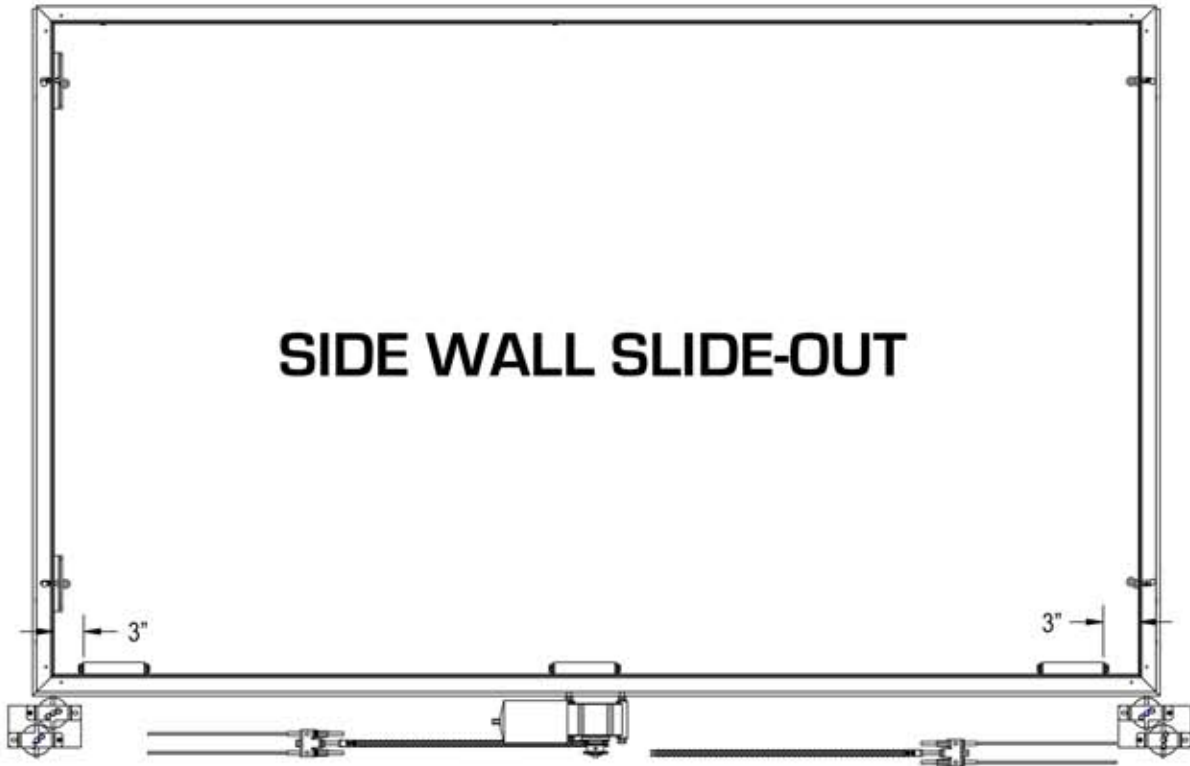
ALUMINUM SCREW COVER FOR EXTERIOR:
SCREW COVER SNAPS INTO FRAME OUTSIDE OF COACH

- 1" WIDE
- 1-1/2" WIDE
- NONE



SPECIAL INSTRUCTIONS:

SIDE WALL SLIDE-OUT



SLIDE CONTROLS CONFIGURATIONS:


- MECHANICS BELOW OPENING (AS SHOWN)
- MECHANICS ABOVE OPENING
- ELECTRONIC MOTOR CONTROL
- LIGHT DUTY SWITCH
- HEAVY DUTY SWITCH
- OVERRIDE FLEX SHAFT

WALL THICKNESS:

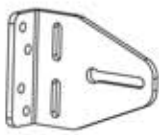
- 1-3/8"
- 1-1/2"
- 1-7/8"
- 2-1/4"

NUMBER OF ROLLERS: _____

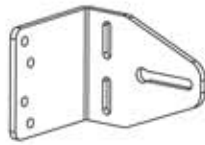
THIS DESIGN USES THE SAME EXTRUSION FOR JAMBS, HEADER, SILL AND IS RECOMMEND FOR SIDE WALL APPLICATIONS

<p>NOTE: THIS DRAWING AND ITS DATA ARE THE PROPERTY OF NORCO INDUSTRIES, INC. ANY USE OF THIS DRAWING OR ITS DATA WITHOUT WRITTEN PERMISSION OF NORCO INDUSTRIES, INC. IS EXPRESSLY FORBIDDEN.</p>		<p>DATE: 8/26/03</p>	 <p>NORCO INDUSTRIES, INC. 53236 C.R. 13 ELKHART IN. (574) 262-3400</p>
<p>TOLERANCES UNLESS OTHERWISE SPECIFIED XX ±.03 XXX ±.005 XXXX ±.0005 ANGLES ±1° FRACTIONS ±1/32</p>		<p>DRAWN BY: J.D.S.</p>	
<p>MATERIAL SPEC #:</p>	<p>FINISH:</p>	<p>APVD BY:</p>	<p>PART NUMBER</p>
<p>E.D. NUMBER:</p>	<p>DESCRIPTION</p>	<p>REVISION:</p>	
<p>SIDE WALL SLIDE-OUT - OPTIONS</p>			

INSIDE STAND-OFF CONFIGURATIONS:



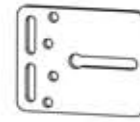
854129



854198



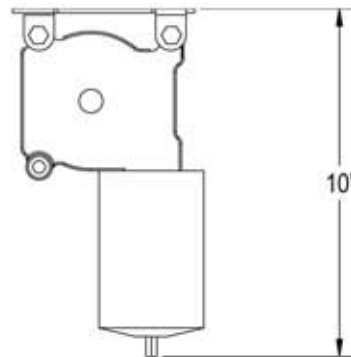
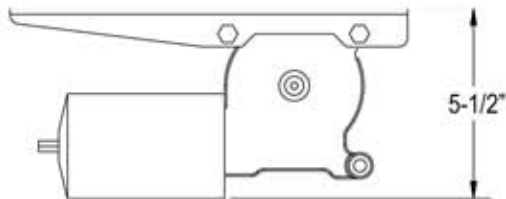
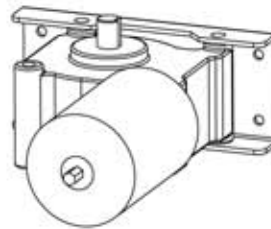
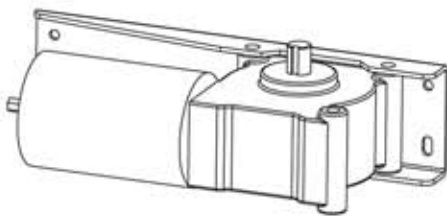
854196



854130

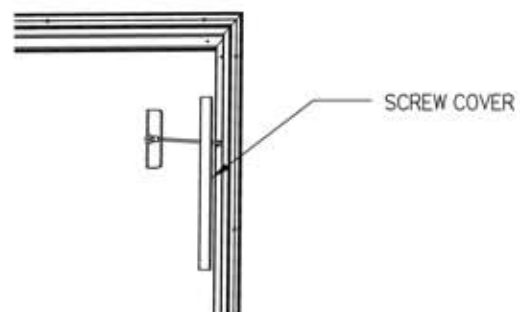


MOTOR MOUNT CONFIGURATIONS:

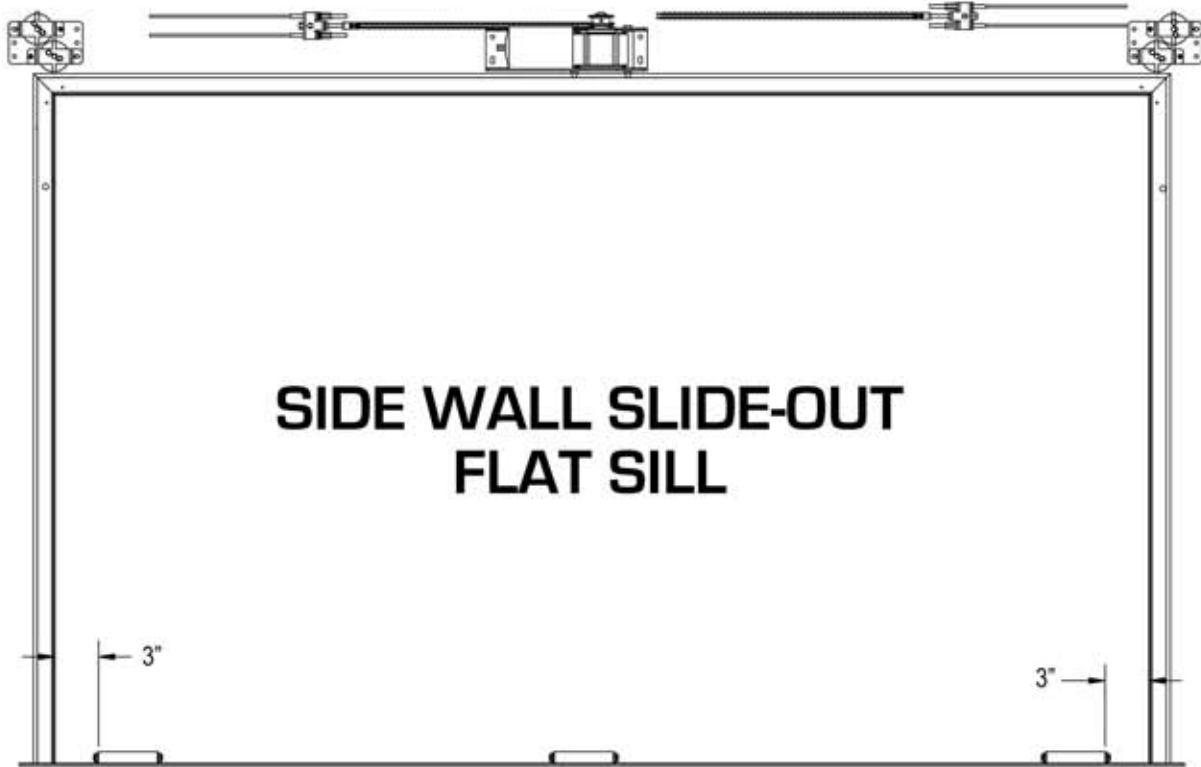


ALUMINUM SCREW COVER FOR EXTERIOR:
SCREW COVER SNAPS INTO FRAME OUTSIDE OF COACH

- 1" WIDE
- 1-1/2" WIDE
- NONE



SPECIAL INSTRUCTIONS:



SIDE WALL SLIDE-OUT FLAT SILL

SLIDE CONTROLS CONFIGURATIONS:

- MECHANICS BELOW OPENING
- MECHANICS ABOVE OPENING (AS SHOWN)
- ELECTRONIC MOTOR CONTROL
- LIGHT DUTY SWITCH
- HEAVY DUTY SWITCH
- OVERRIDE FLEX SHAFT

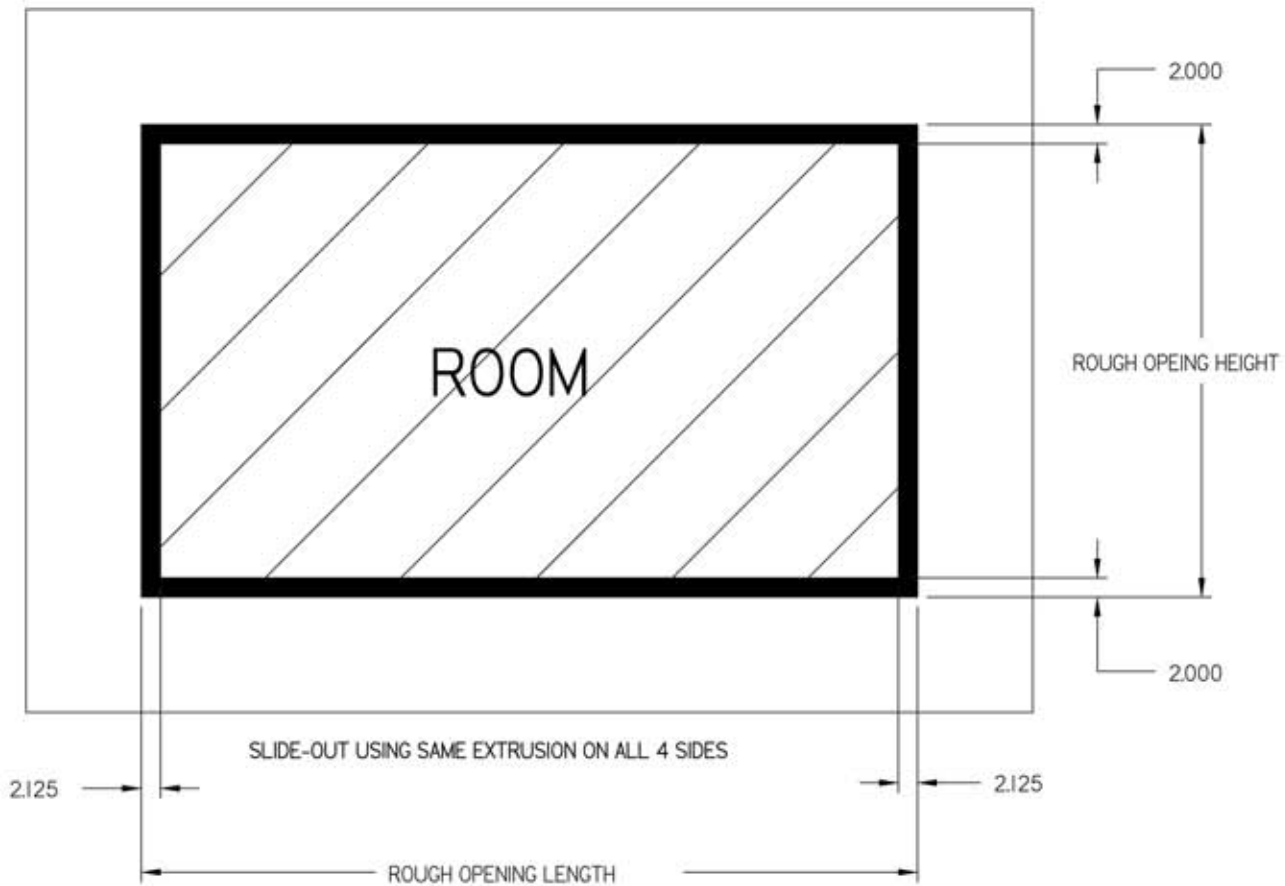
WALL THICKNESS:

- 1-3/8"
- 1-1/2"
- 1-7/8"
- 2-1/4"

NUMBER OF ROLLERS: _____

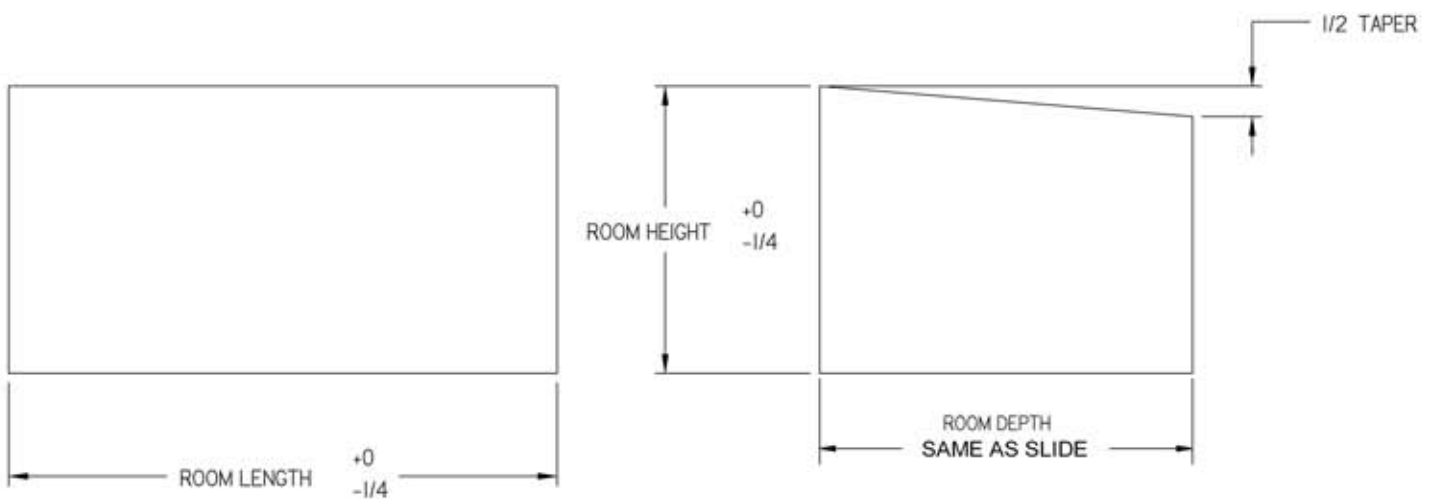
THIS DESIGN USES THE SAME EXTRUSION FOR JAMBS, HEADER WITH FLAT SILL EXTRUSION AND IS RECOMMEND FOR SIDE WALL APPLICATIONS

NOTE: THIS DRAWING AND ITS DATA ARE THE PROPERTY OF NORCO INDUSTRIES, INC. ANY USE OF THIS DRAWING OR ITS DATA WITHOUT WRITTEN PERMISSION OF NORCO INDUSTRIES, INC. IS EXPRESSLY FORBIDDEN.		DATE: 8/26/03	 NORCO INDUSTRIES, INC. <small>53236 C.R. 13 ELKHART IN. (574) 262-3400</small>
TOLERANCES UNLESS OTHERWISE SPECIFIED XX ±.03 XXX ±.005 XXXX ±.0005 ANGLES ±1° FRACTIONS ±1/32		DRAWN BY: J.D.S.	
MATERIAL SPEC #:	FINISH:	APVD BY:	PART NUMBER
E.D. NUMBER:	SIDE WALL SLIDE-OUT - OPTIONS		REVISION:

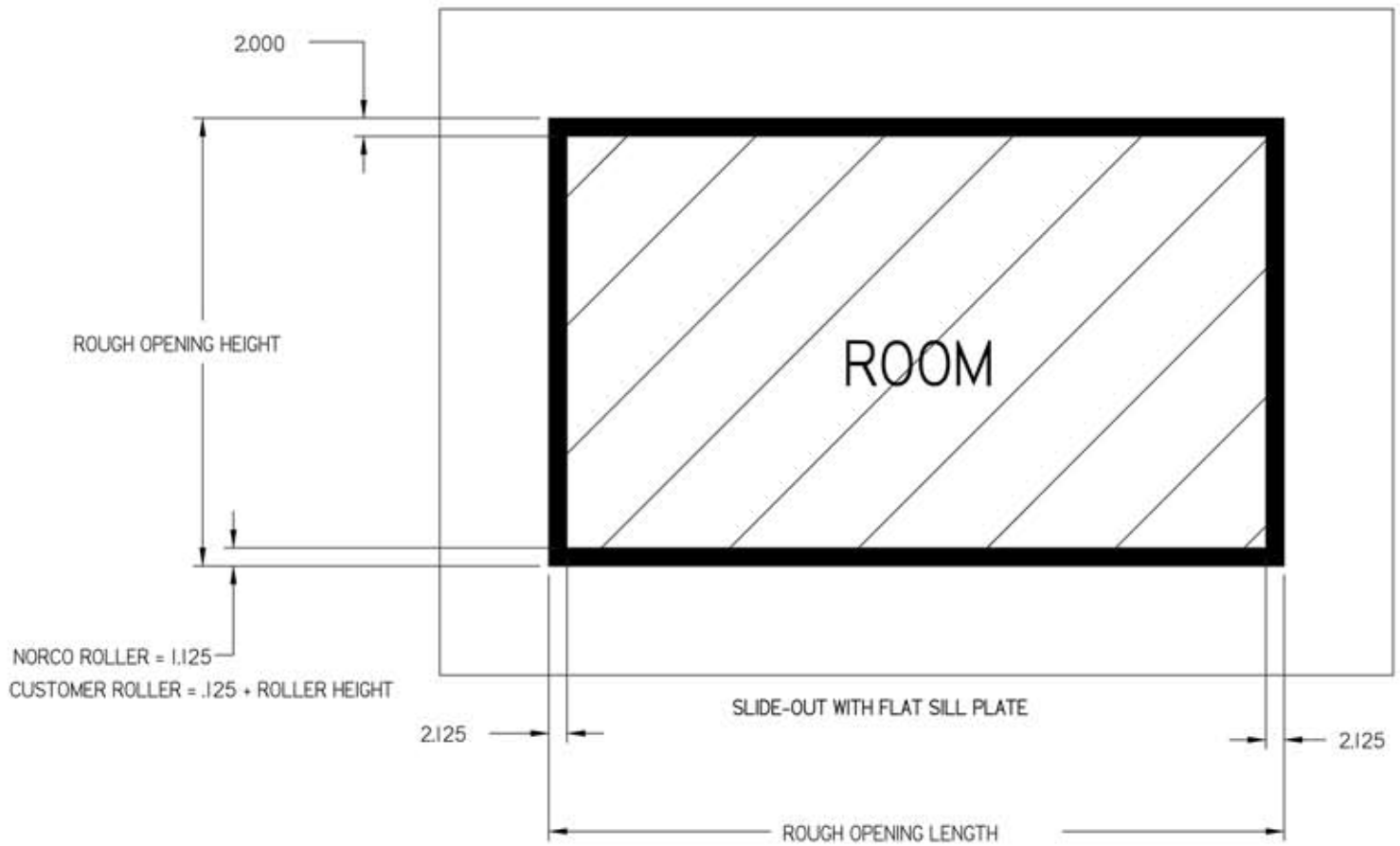


$$\text{ROOM LENGTH} = \text{ROUGH OPENING LENGTH} - 4.250$$

$$\text{ROOM HEIGHT} = \text{ROUGH OPENING HEIGHT} - 4.000$$



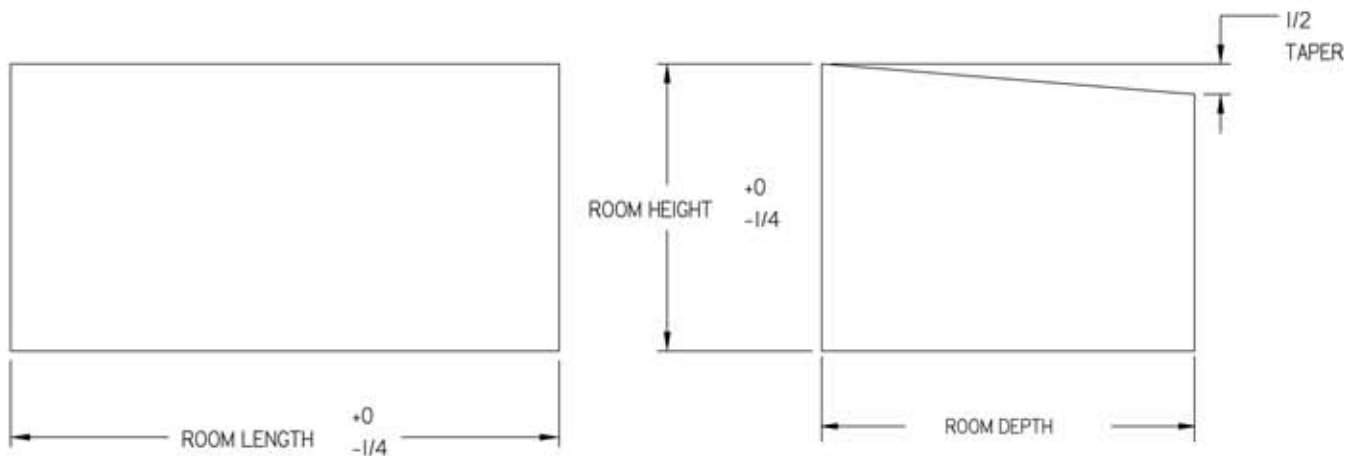
NOTICE:
 ROOM DIMENSIONS ARE FROM OUTSIDE TO OUTSIDE.
 ROOM DIMENSIONS SHOULD TAKE INTO CONSIDERATION ANY TRIMS OR FACIA THAT MIGHT SLIDE BETWEEN
 OUTSIDE OF ROOM AND THE FRAME WORK OF THE SLIDE MECHANICS.




ROOM LENGTH = ROUGH OPENING LENGTH - 4.250

ROOM HEIGHT USING NORCO ROLLERS = ROUGH OPENING HEIGHT - 3.125

ROOM HEIGHT USING CUSTOMER ROLLER = ROUGH OPENING HEIGHT - 2.000 - (ROLLER HEIGHT + .125)

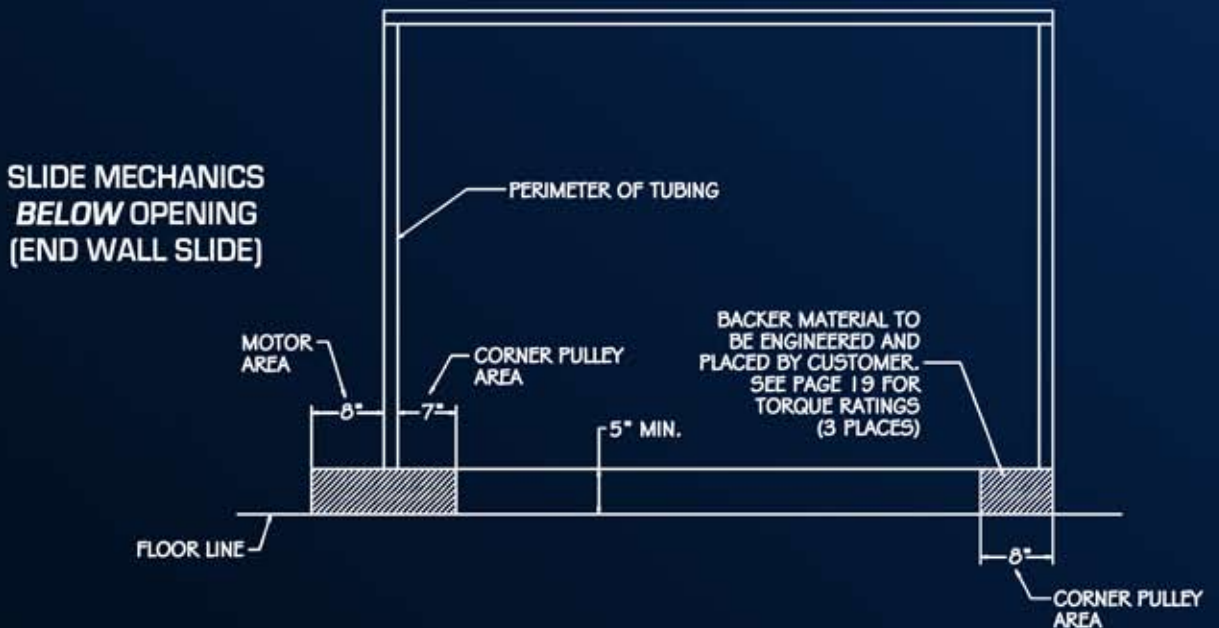
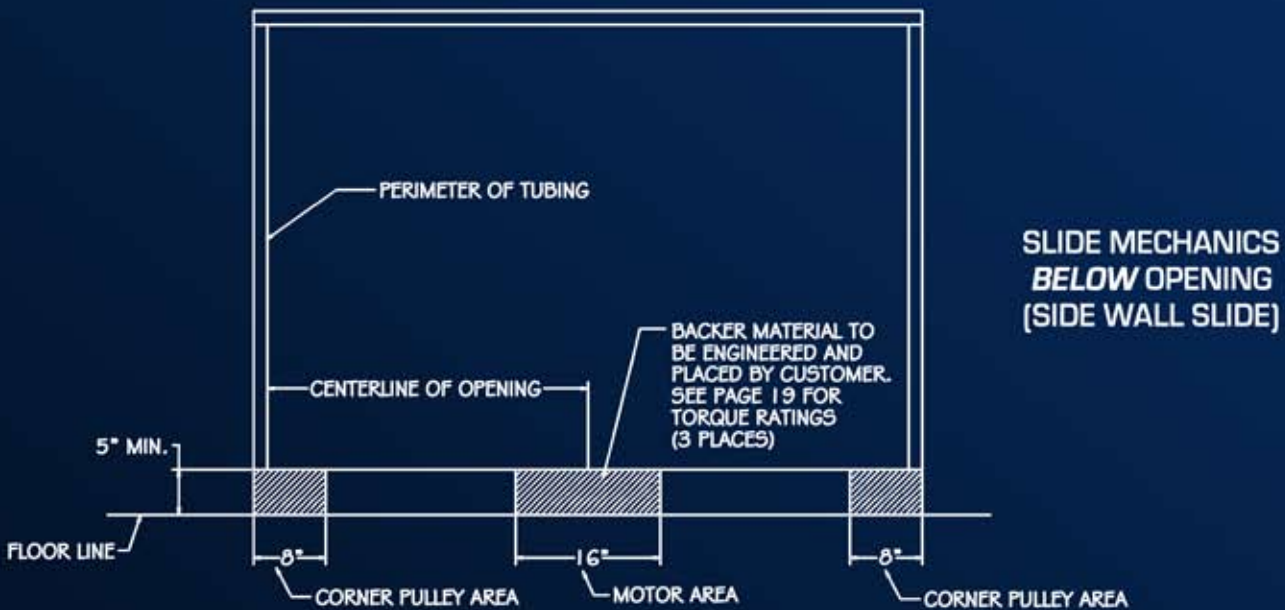
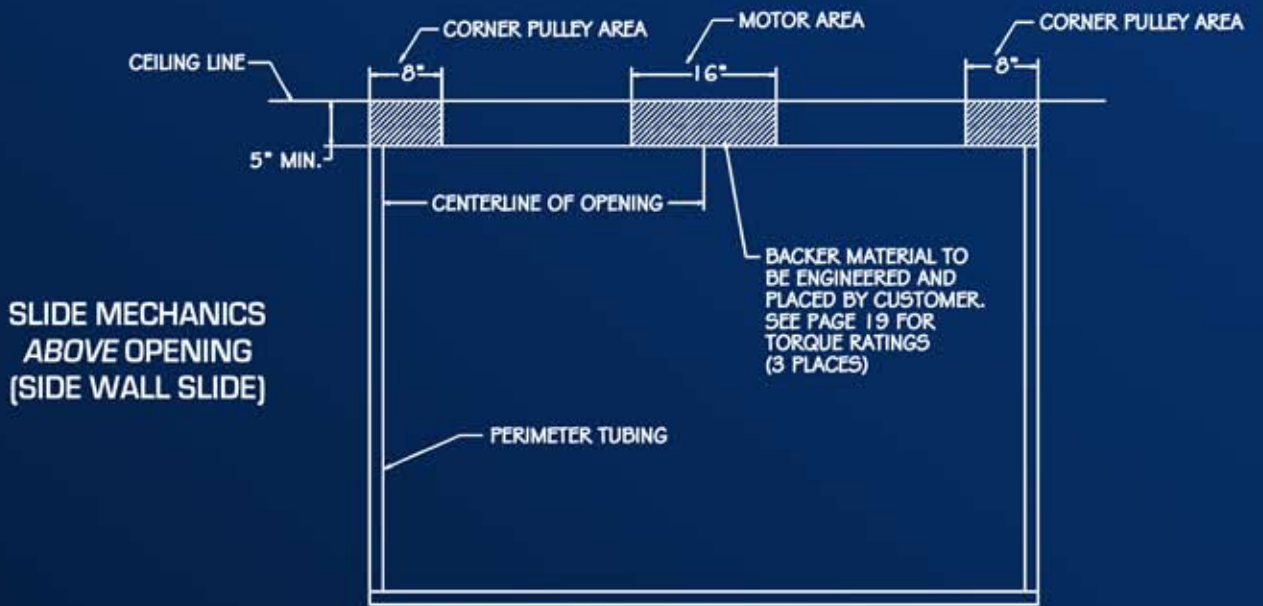


NOTE: THIS DRAWING AND ITS DATA ARE THE PROPERTY OF NORCO INDUSTRIES, INC. ANY USE OF THIS DRAWING OR ITS DATA WITHOUT WRITTEN PERMISSION OF NORCO INDUSTRIES, INC. IS EXPRESSLY FORBIDDEN.		DATE: 8/26/03	 NORCO INDUSTRIES, INC. 53236 C.R. 13 ELKHART IN. (574) 262-3400
TOLERANCES UNLESS OTHERWISE SPECIFIED: XX ±.03 XXX ±.005 XXXX ±.0005 ANGLES ±1° FRACTIONS ±1/32		DRAWN BY: J.D.S.	
MATERIAL SPEC #:	FINISH:	APVD BY:	
E.D. NUMBER:	DESCRIPTION: ROOM SIZE FORMULAS	PART NUMBER	REVISION:

STEP 3: PREPARE ROUGH OPENING

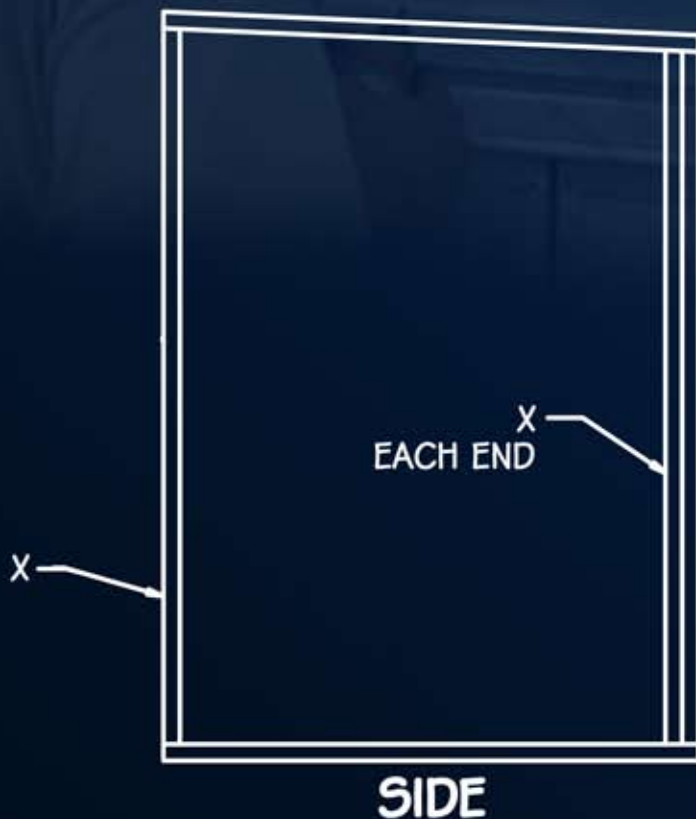


RECOMMENDED ROUGH OPENING PREPARATIONS



STEP 4: PREPARE ROOM

RECOMMENDED ROOM PREPARATION...

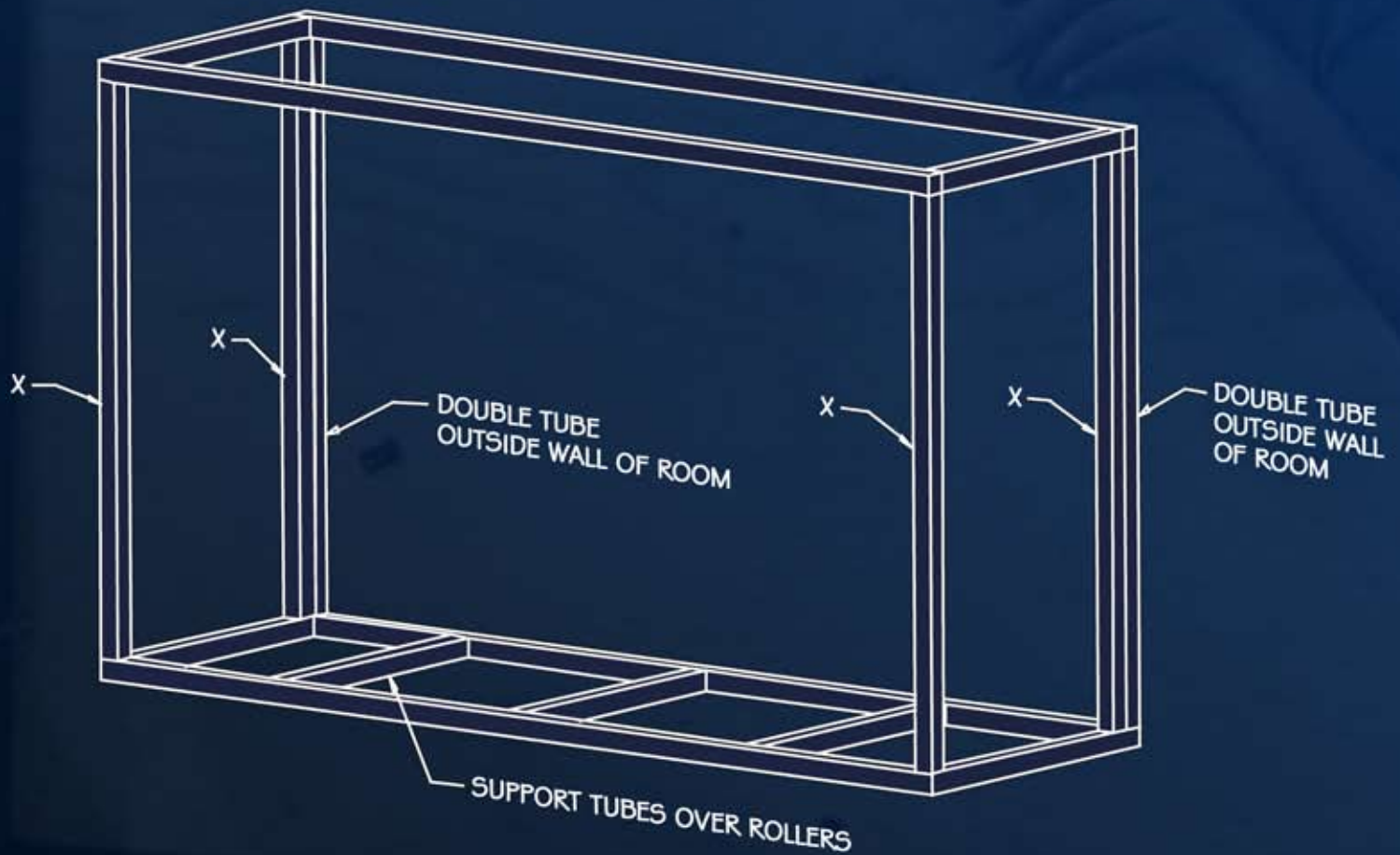


IF USING TUBING FOR FRAMING,
TUBES MARKED BY "X" SHOULD
BE STUFFED WITH WOOD.

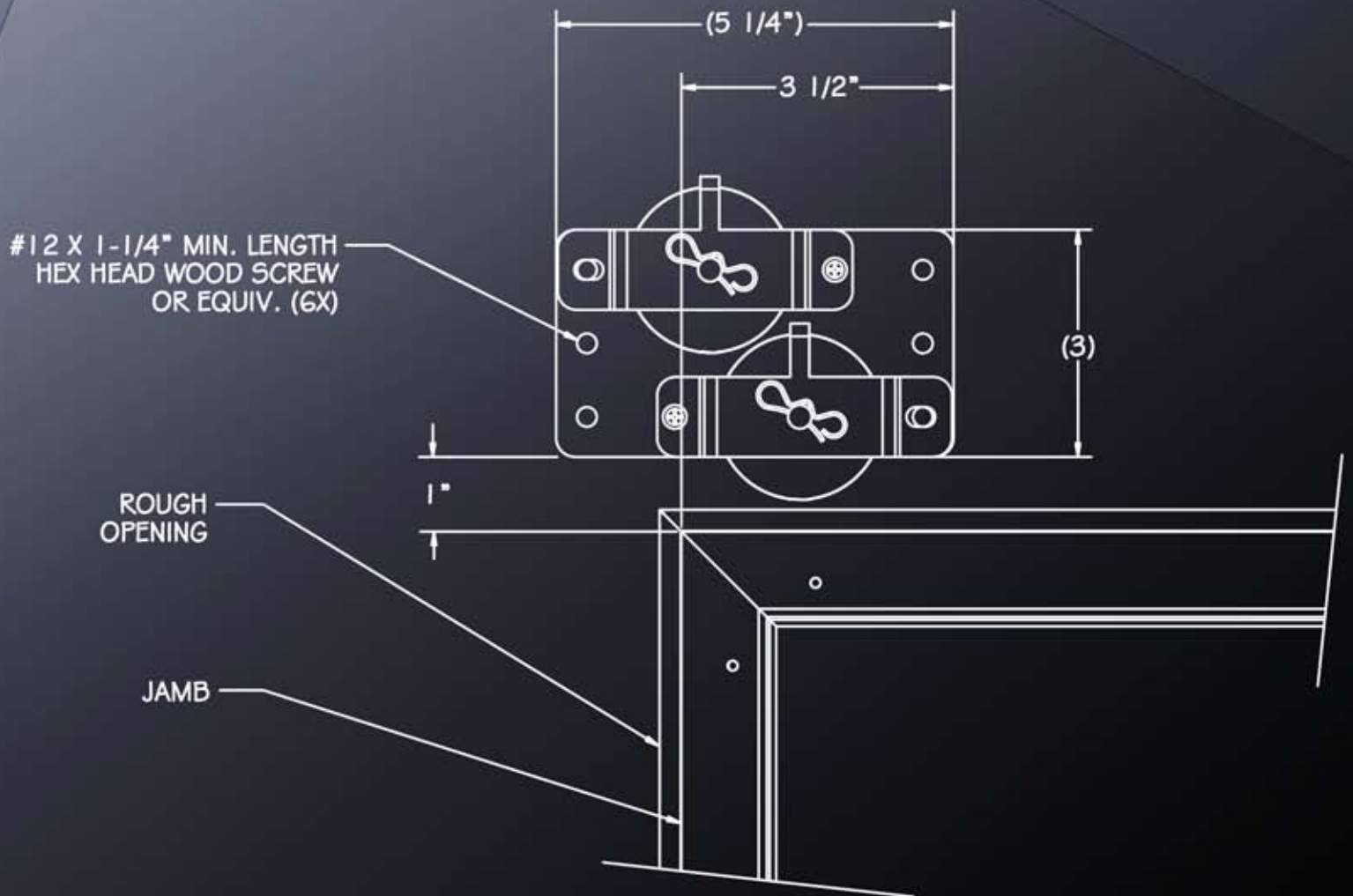
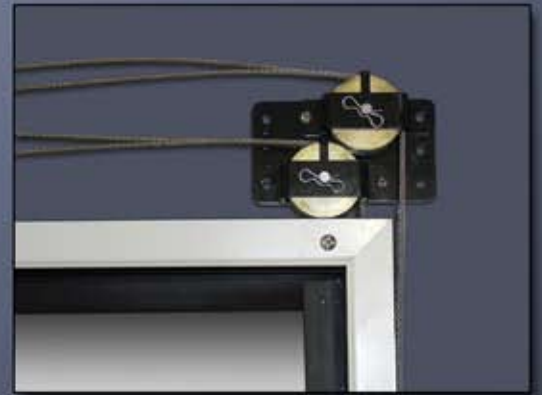
3D VIEW OF ROOM →

3D VIEW OF ROOM STRUCTURE...

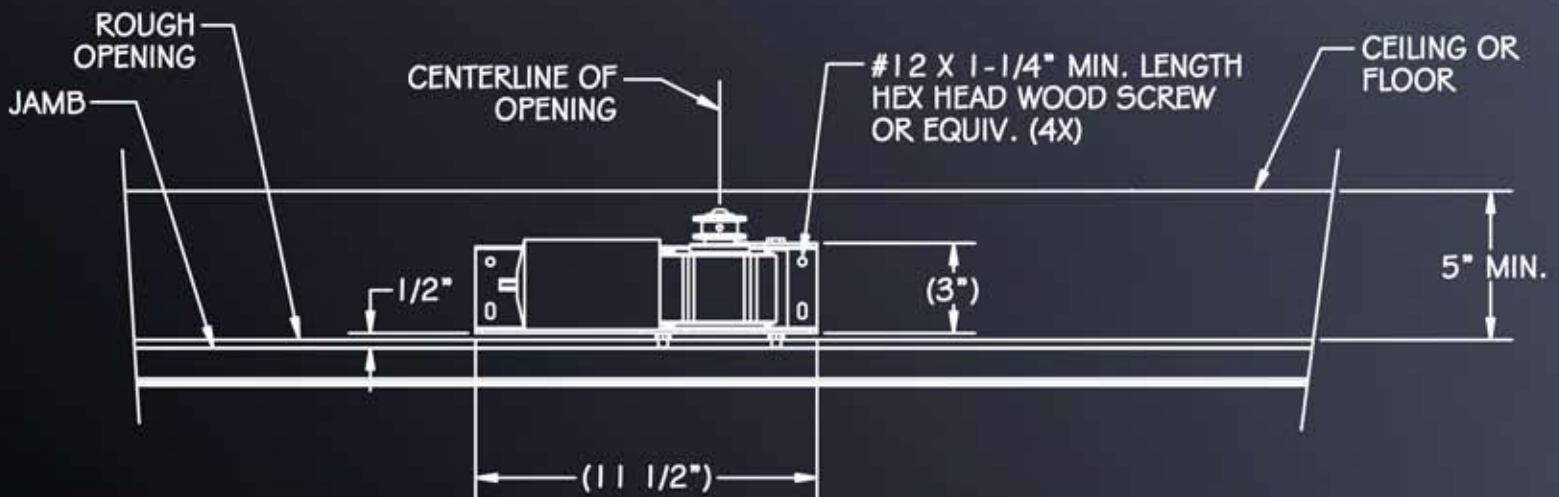
IF USING TUBING FOR FRAMING,
TUBES MARKED BY "X" SHOULD
BE STUFFED WITH WOOD.



STEP 5: MOUNT PULLEYS



STEP 6: MOUNT MOTOR



MOTOR DATA:
APPX. 35 RPM NO LOAD
APPX. 30 RPM, 250 IN/LBS, 22 AMPS
APPX. 9 RPM, 800 IN/LBS, 74 AMPS

NORMAL OPERATING AMP LOAD 12-18 AMPS
PEAK OPERATING AMP LOAD 65 AMPS
RECOMMENDED 10 GA. WIRING TO MOTOR

STEP 7: PLACE ROOM & MOUNT STANDOFFS



OUTSIDE

INSIDE

VIEW FROM
INSIDE COACH

SLOTS USED FOR
ADJUSTMENT
BEFORE PLACING
PERMANENT SCREWS

USE #10 - #12
PAN HEAD SCREWS

SLOTS USED FOR
ADJUSTMENT BEFORE
PLACING PERMANENT
SCREWS

MOUNT STANDOFF BRACKETS
SO CABLE ENTERS CENTER
OF HOLE IN JAMB
(8 PLACES)

ROOM SHOWN
HALF TRAVEL

STEP 8: MAKE CHAIN & CABLE CONNECTIONS



CHAIN & CABLE CONNECTORS WILL BE SHIPPED
PRE-ASSEMBLED. ALL THAT IS REQUIRED IS
CHAINS BE PLACED ON SPROCKETS.

STEP 9: ADJUST

CABLE ADJUSTMENT INSTRUCTIONS (Colors indicate adjuster brackets)

854202

IMPORTANT: THIS SYSTEM IS A GIVE AND TAKE SYSTEM. BEFORE TIGHTENING FOR FIT, MAKE SURE YOU HAVE ENOUGH SLACK IN THE OPPOSING CABLES FOR THE REQUIRED ADJUSTMENT.

LEFT FRONT controls tension for the left side seal when room is out. **RED**
Top cable screw adjusts the room bottom. *(Opposing cable: Left rear top)*
Bottom cable screw adjusts the room top. *(Opposing cable: Left rear bottom)*

RIGHT FRONT controls tension for the right side seal when it is in. **GREEN**
Top cable screw adjusts the room bottom. *(Opposing cable: Right rear top)*
Bottom cable screw adjusts the room top. *(Opposing cable: Right rear bottom)*

LEFT REAR controls tension for the left side seal when room is in. **BLUE**
Top cable screw adjusts the room bottom. *(Opposing cable: Left front top)*
Bottom cable screw adjusts the room top. *(Opposing cable: Left front bottom)*

RIGHT REAR controls tension for the right side seal when it is out. **PURPLE**
Top cable screw adjusts the room bottom. *(Opposing cable: Right front top)*
Bottom cable screw adjusts the room top. *(Opposing cable: Right front bottom)*

BAL POWER JAMB

BAL is a registered trademark of Norco Industries, Inc.

U.S. Patent#: 6254171
Other U.S. and Foreign
Patents Pending.

RECOMMENDED TOOLS:

- 3/8" DEEP WELL SOCKET
- 7/16" DEEP WELL SOCKET
- 7/16" OPEN-END WRENCH
- VICE GRIPS



STEP 10: FINISH



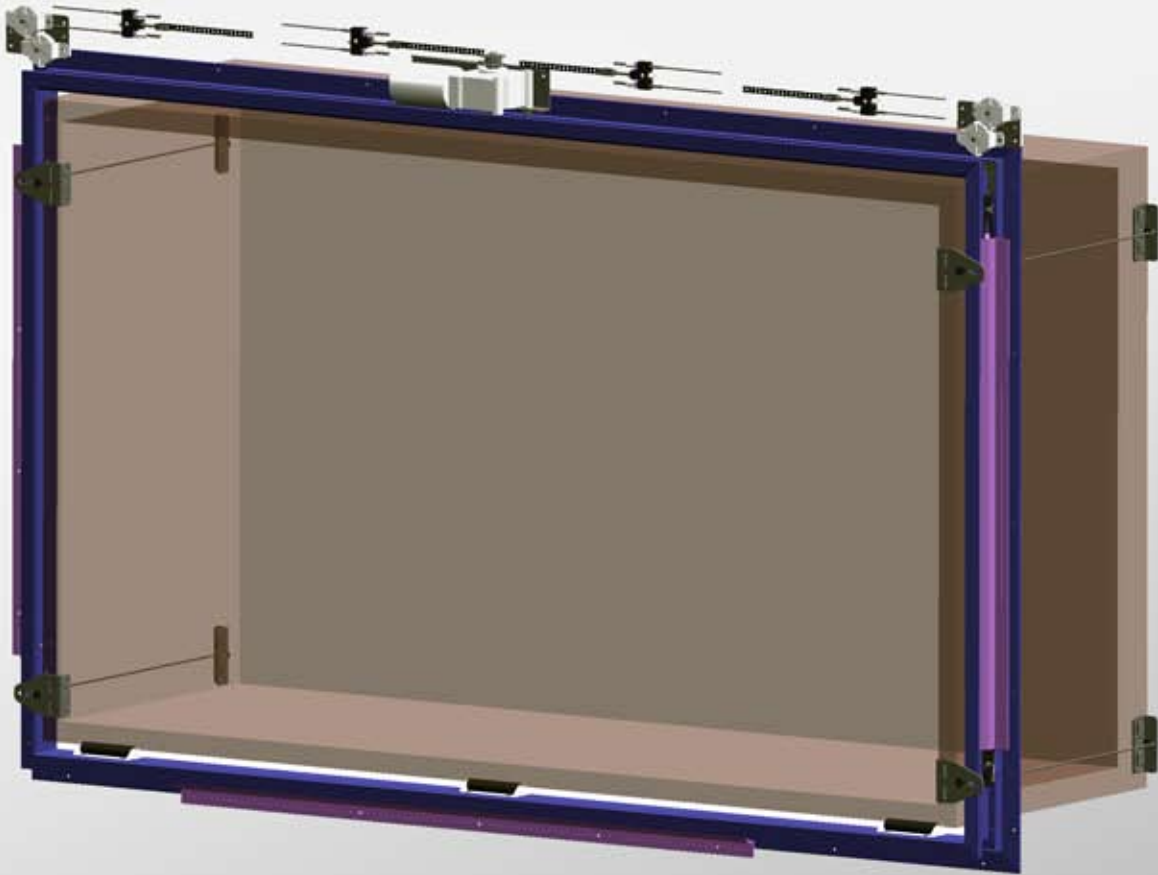
SLIDEOUT MECHANICS EXPOSED



MECHANICS HIDDEN UNDER VALANCE

ACCUSLIDE™

EXPANDABLE ROOM SYSTEM



Maintenance of the Accuslide System should never be performed by the end-user.

Any adjustment or service should be done by a certified service representative.

For assistance, please contact your nearest dealer.