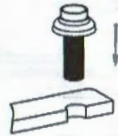


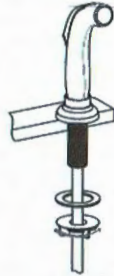
# Two Handle Kitchen Bar Sink Faucet

07



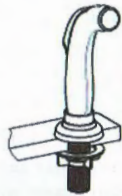
Insert the base of sidespray

08



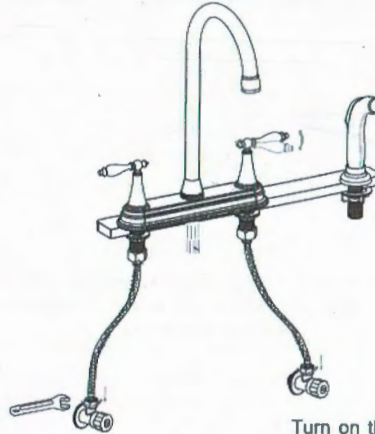
put on washer and fitting nut

09



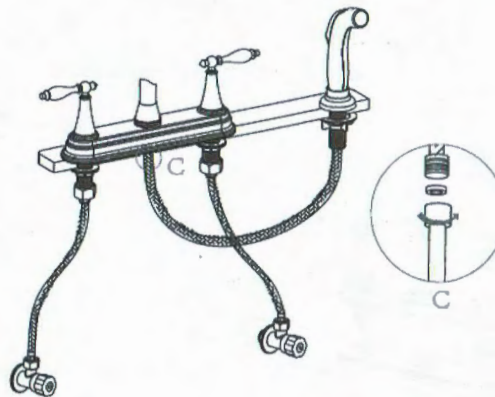
Tighten it

10



Turn on the water supplies. While rotating the handle, flush the hot and cold water for 1 minute.

11



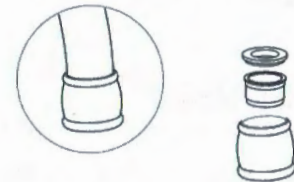
Connect and tighten the supply hoses.

12

## Care and Cleaning

For best results, keep the following in mind when caring for your VAPSINT product:

- Use a mild detergent such as liquid dishwashing soap and warm water for cleaning. Do not use abrasive cleaners that may scratch or dull the surface.
- Carefully read the cleaner product label to ensure the cleaner is safe for use on the material.
- Always test your cleaning solution on an inconspicuous area before applying to the entire surface.
- Do not allow cleaners to sit or soak on the surface.
- Wipe surfaces clean and rinse completely with water immediately after cleaner application. Rinse and dry any overspray that lands on nearby surfaces.



# Two Handle Kitchen Bar Sink Faucet

Applicable faucets (including but not limited)



## TOOLS YOU WILL NEED



Adjustable wrench



Phillips screwdriver



Hex Wrench



Two Male Supply



pipe tape

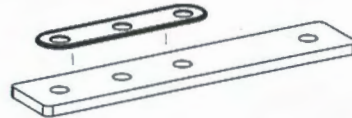


Silicone sealant/Putty

## INSTALLATION

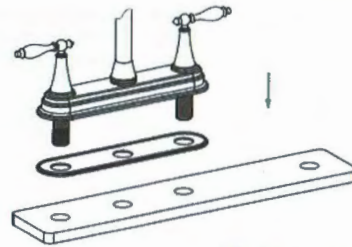
**Prior to installation:** Shut off water supply. Remove old faucet. Clean sink/countertop surface in preparation for new faucet

01



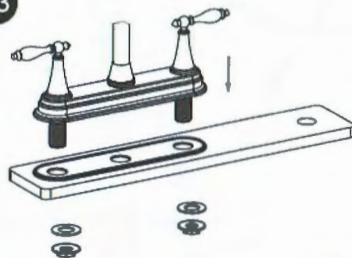
Apply some plumbers putty or other suitable sealant to the bottom edge of undercover.

02



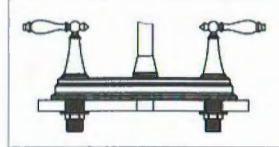
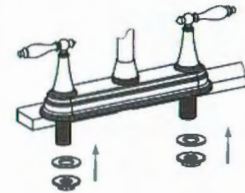
Align and press into place

03



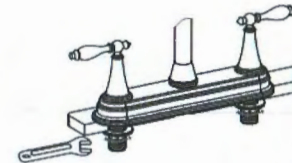
Insert the faucet through sink

04



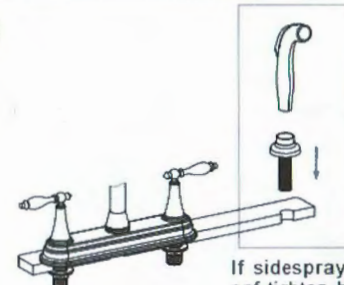
Screw the nut onto shank, leaving approximately 0.12"(3mm) between the ring and the sink.

05



Tighten fitting nuts with adjustable wrench. Do not over tighten!

06



If sidespray not included, connect and tighten hoses with hot and cold water supply. If included, insert the sidespray, proceed to step 7-11.