

DELTA GLIDE™100™

DRAWER SLIDE SYSTEM

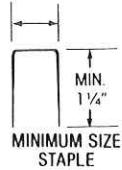
50 lb. load tested per ANSI A161.1 test requirements for drawer hardware
Complete test results available upon request

STEP 1 ▼

- A.** Center glide component on drawer bottom flush with drawer back.
- B.** Screw fasten with three #6 × 3/4" pan head screws. DO NOT over tighten screws. A 1/2 turn after screw head contacts surface of glide is adequate.

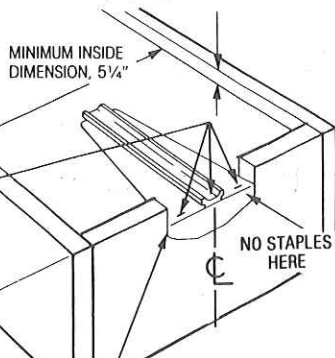
Note: If staple fastening use a minimum of three (3) wide crown staples as shown.

3/8" to 1/2"



Drawer side must be a min. of 5/16" smaller than cabinet opening.

MUST BE 3/8"; any variation the glide will not operate properly.

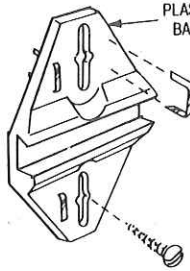
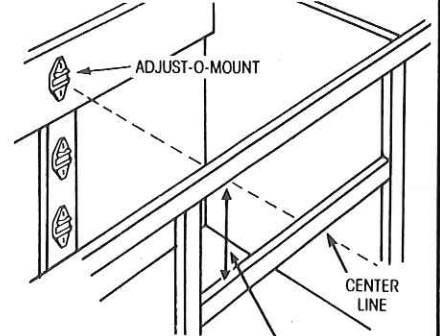


IMPORTANT
If drawer back extends below drawer bottom, you must notch out for glide.

STEP 2 ▼

- A.** Locate centerline of drawer opening in back of cabinet for position for Adjust-O-Mount.
- B.** Fasten Adjust-O-Mount by stapling through plastic base or screw into provided vertical adjust slots.

For drawer stacks, attach Adjust-O-Mount base to vertical strip. Base can be premounted prior to installing vertical strip.

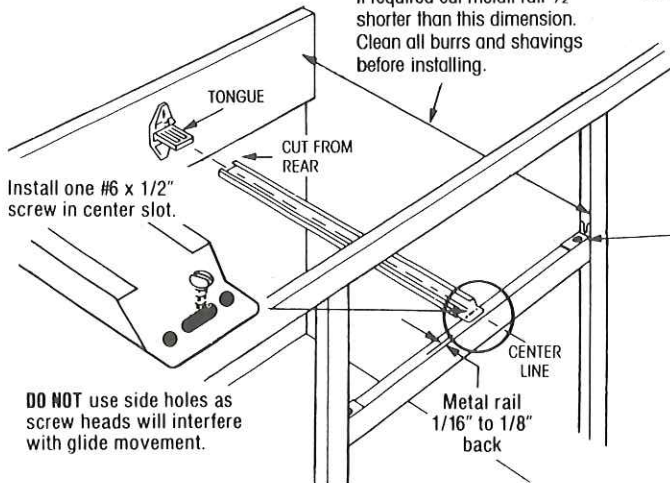


Note: If vertical adjustment is desired at rear mount use two #6 x 1/2" pan head screws in center of screw slots.

Drawer side must be 5/16" smaller than opening.

STEP 3 ▼

If required cut metal rail 1/2" shorter than this dimension. Clean all burrs and shavings before installing.



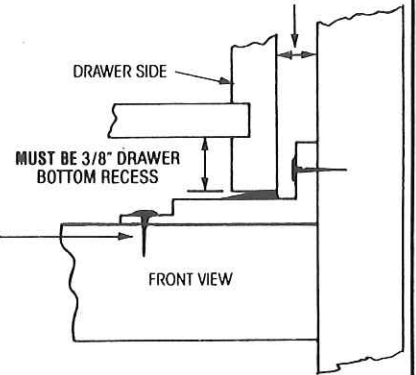
Install one #6 x 1/2" screw in center slot.

DO NOT use side holes as screw heads will interfere with glide movement.

- A.** Insert metal channel over tongue of Adjust-O-Mount.
- B.** Position metal rail tab over center of drawer opening, screw fasten to cabinet frame.
- C.** Locate rollers at each side of face frame and secure with staples or tacks thru plastic base.



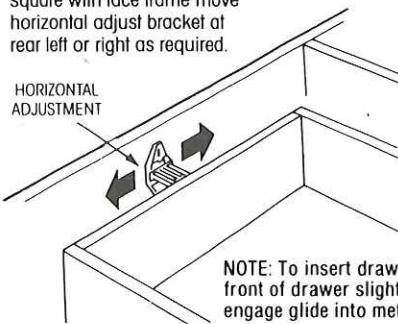
1/4" EACH SIDE



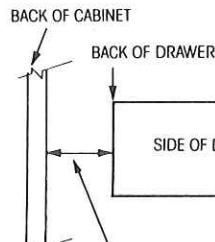
STEP 4 ▼

- A.** Insert drawer to closed position, if drawer front is not square with face frame move horizontal adjust bracket at rear left or right as required.

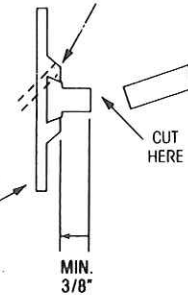
HORIZONTAL ADJUSTMENT



NOTE: To insert drawer, raise front of drawer slightly as you engage glide into metal rail.

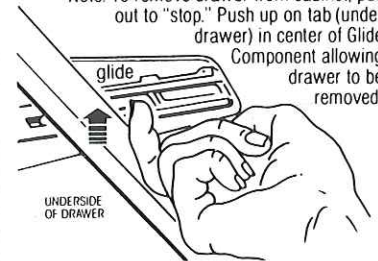


If this space is less than 1 3/4" cut back support bracket as shown.



DRAWER REMOVAL INSTRUCTIONS

Note: To remove drawer from cabinet, pull out to "stop." Push up on tab (under drawer) in center of Glide Component allowing drawer to be removed.



Note: Drawer release instruction labels as shown above are available. Contact your Distributor or manufacturer for these self stick labels.



Manufactured by **DELTA INDUSTRIES**
775-246-8700 FAX 775-246-9966
Carson City, Nevada USA

PRINTED IN USA